

available at [www.sciencedirect.com](http://www.sciencedirect.com)journal homepage: [www.ejconline.com](http://www.ejconline.com)

## Autoantibody profiling to identify biomarkers of key pathogenic pathways in mucinous ovarian cancer

Liangdan Tang <sup>a,g</sup>, Junzheng Yang <sup>a</sup>, Shu-Kay Ng <sup>b</sup>, Noah Rodriguez <sup>a</sup>, Pui-Wah Choi <sup>c</sup>, Allison Vitonis <sup>a</sup>, Kui Wang <sup>d</sup>, Geoffrey J. McLachlan <sup>d</sup>, Robert J. Caiazzo Jr. <sup>e</sup>, Brian C.-S. Liu <sup>e</sup>, William R. Welch <sup>f</sup>, Daniel W. Cramer <sup>a</sup>, Ross S. Berkowitz <sup>a</sup>, Shu-Wing Ng <sup>a,\*</sup>

<sup>a</sup> Department of Obstetrics, Gynecology and Reproductive Biology, Brigham and Women's Hospital, Boston, MA 02115, USA

<sup>b</sup> School of Medicine, Griffith University, Meadowbrook, QLD4131, Australia

<sup>c</sup> Department of Biochemistry, Chinese University of Hong Kong, Hong Kong, China

<sup>d</sup> Department of Mathematics, University of Queensland, Brisbane, QLD4072, Australia

<sup>e</sup> The Molecular Urology Laboratory, Division of Urology, Brigham and Women's Hospital, Boston, MA 02115, USA

<sup>f</sup> Department of Pathology, Brigham and Women's Hospital, Boston, MA 02115, USA

### ARTICLE INFO

#### Article history:

Received 11 September 2009

Accepted 1 October 2009

Available online 16 November 2009

#### Keywords:

Autoantibody

Ovarian cancer

Smoking

Profiling

Signalling pathway

### ABSTRACT

Mucinous epithelial ovarian cancers are clinically and morphologically distinct from the other histopathologic subtypes of ovarian cancer. Unlike other ovarian subtypes, epidemiologic studies have indicated that tobacco exposure is a significant risk factor for developing mucinous ovarian cancer. Detection of autoantibody reactivity is useful in biomarker discovery and for explaining the role of important pathophysiologic pathways in disease. In order to study if there are specific antibody biomarkers in the plasma samples of mucinous ovarian cancer patients, we have initiated a screen by employing a 'reverse capture antibody microarray' platform that uses native host antigens derived from mucinous ovarian tissues as 'baits' for the capture of differentially labelled patient and control autoantibodies. Thirty-five autoantibodies that were significantly elevated in the cancer plasma samples compared with healthy controls, and six autoantibodies that segregated smoking and non-smoking patients were identified. Functional annotation of the antibody targets has identified nine target antigens involved in integrin and Wnt signalling pathways. Immunohistochemistry of archived ovarian specimens showed significant overexpression of eight of the nine target antigens in mucinous ovarian tumour tissues, suggesting that plasma autoantibodies from mucinous ovarian cancer patients might have heightened reactivities with epitopes presented by these overexpressed antigens. Autoantibody profiling may have an unexpected utility in uncovering key signalling pathways that are dysregulated in the system of interest.

© 2009 Elsevier Ltd. All rights reserved.

\* Corresponding author. Address: Laboratory of Gynecologic Oncology, 221 Longwood Avenue, Brigham and Women's Hospital, Boston, MA 02115, USA. Tel.: +1 617 278 0072; fax: +1 617 975 0856.

E-mail address: [sng@partners.org](mailto:sng@partners.org) (S.-W. Ng).

<sup>g</sup> Present address: Department of Obstetrics and Gynecology, The First Affiliated Hospital of Chongqing Medical University, No. 1 Yixue Yuan Road, Yuzhong District, Chongqing 400016, PR China.

0959-8049/\$ - see front matter © 2009 Elsevier Ltd. All rights reserved.

doi:10.1016/j.ejca.2009.10.003

## 1. Introduction

Ovarian cancer accounts for more than half of the deaths due to gynaecological malignancy.<sup>1</sup> Because of the lack of sensitive tests for the detection of early stage disease, which is often without prominent symptoms, 75% of malignant epithelial ovarian tumours are detected in late stage, with a 5-year survival rate of about 30%.<sup>2</sup> Ovarian cancer is morphologically classified into four major subtypes: serous, mucinous, clear cell and endometrioid.<sup>3</sup> Mucinous tumours comprise 12–15% of epithelial ovarian cancers. They are cystic tumours with locules lined with mucin-secreting epithelial cells resembling either endocervical or colonic epithelium. According to the World Health Organisation classification, mucinous ovarian tumours are categorised as cystadenomas, borderline tumours, non-invasive intraglandular and intraepithelial carcinomas, invasive carcinomas and metastatic from other sites. While invasive mucinous carcinomas account for only 10% of epithelial ovarian cancers, 27% of patients with stage I epithelial ovarian cancer have mucinous pathology.<sup>4</sup> Primary mucinous ovarian tumours are usually distinguished immunohistochemically by positive staining for cytokeratin 7 and negative staining for cytokeratin 20.<sup>5</sup>

Molecular and clinical studies have shown that mucinous ovarian tumours are distinct from other ovarian tumour subtypes in aetiological pathways, response to chemotherapy, and outcome for patients. Unlike the more common serous subtype, mucinous ovarian tumours are not associated with p53, BRCA1 or BRCA2 mutation, have frequent *k-ras* mutations and modest ratio between the serum markers CA125 and carcinoembryonic antigen CEA.<sup>5</sup> Molecular and pathologic studies also support a progression model for the development of mucinous ovarian tumours.<sup>6</sup> Transitions between benign and malignant areas are seen in 80% of malignant mucinous adenocarcinomas. Identical *k-ras* mutations are frequently found in coexisting borderline and invasive epithelia within a mucinous tumour.<sup>7,8</sup> Gene expression profiling also identified co-regulated genes shared between cystadenomas and invasive mucinous tumours,<sup>9</sup> supporting the view that invasive tumours are evolved from the benign disease. Patients with mucinous ovarian cancer were treated with the standard platinum-taxane regimens like the other histologic types. However, advanced mucinous ovarian adenocarcinomas show poor response rates of 26–42% to first-line platinum-based chemotherapy.<sup>10</sup> In addition, many multicentre, population-based, case-control investigations in ovarian cancer have indicated that women with smoking exposure have significant risk of developing mucinous ovarian cancer.<sup>11–13</sup> The adjusted odds ratio of smoking exposure to mucinous cancer development ranged from 1.5 to 3.2, with the current smokers having the highest risk. Similar patterns of elevated risk were not observed among other ovarian histologic types. Extensive studies on the aetiology of smoking-related mucinous ovarian cancer should be beneficial for cancer prevention and cancer therapies.

Recent human whole genome sequencing projects have revealed that human cancers are characterised by deregulations of a few core signalling pathways.<sup>14,15</sup> Identification of these key signalling pathways is essential for the understanding of

pathogenic mechanisms and targeted therapeutic development. It is well known that cancer patient sera contain antibodies that react with a unique group of autologous cellular antigens called tumour-associated antigens.<sup>16,17</sup> These autoantibodies, together with T cell responses, represent the adaptive immune response to tumour-associated antigens in cancer patients.<sup>18</sup> Detection of autoantibody reactivity is useful in biomarker discovery and for explaining the role of important pathways in the pathophysiologic development of diseases. Recent studies on tumour-associated antigen-induced autoantibodies have demonstrated that the titres of some autoantibodies were significantly elevated several years before the diagnosis of cancer and therefore can serve as an early signal of increased risk of developing cancer.<sup>19–21</sup> These characteristics of autoantibodies highlight the potential in evaluating cancer risk and early cancer detection.

There are multiple platforms to compare the whole serum autoantibody repertoires between tumour patients and normal controls.<sup>22</sup> The most commonly used method is the use of autoimmune serum in the serological analysis of recombinant cDNA expression libraries,<sup>23</sup> or recently of high-density protein microarrays.<sup>24</sup> However, this strategy fails to identify autoantibodies that target low abundance proteins and peptides generated from enzymatic cleavages or degradations; recombinant proteins generated from the cDNA library may also lack posttranslational modifications and native configuration necessary for the antibody recognition. Other proteomic methods are either labour intensive or require expensive equipment such as mass spectrometry.<sup>25–27</sup> We have applied an innovative reverse-capture antibody array platform that uses tumour tissue-derived native protein antigens captured on an antibody microarray to profile autoantibody biomarkers in mucinous ovarian cancer plasma samples. We have also analysed the expression levels of the target antigens that may suggest the deregulation of key signalling pathways in the pathogenesis of mucinous ovarian cancer.

## 2. Materials and methods

### 2.1. Clinical specimens

The ovarian plasma and tissue samples for this study were selected from the Ob/Gyn Epidemiology Center and tumor bank at the Laboratory of Gynecologic Oncology at Brigham and Women's Hospital. The plasma samples collected at the Ob/Gyn Epidemiology Center were from a population-based case-control study of ovarian cancer, and a NIH Early Detection Research Network (EDRN) pre-operative/post-operative study. The studies were approved by the Brigham and Women's Hospital and Dartmouth Medical Center's Institutional Review Boards. The normal controls were identified and invited through town books in Massachusetts and Drivers' License lists in New Hampshire and sampled to match the age and residence of the tumour cases. The tumour tissues collected at the Laboratory of Gynecologic Oncology at Brigham and Women's Hospital used protocols approved by the Institutional Review Boards. The histopathological characteristics of the samples were provided by specialists in

gynaecologic pathology. Patient's consent was obtained before the collection of clinical samples.

## 2.2. Reverse capture antibody array profiling using tumour tissue-derived native antigens

The detailed protocols can be found in published references,<sup>28,29</sup> with minor modifications. Briefly, human IgG was isolated from 20 µl of each cancer plasma sample using the Melon™ Gel IgG Spin Purification Kit (Pierce Biotechnology, Rockford, IL), according to the manufacturer's instruction. The control IgG was pooled from 20 age-matched healthy women. One hundred micrograms of purified cancer and control IgGs were labelled for 45 min with Cy3 and Cy5 mono-Reactive Dye Packs (GE Healthcare Bio-Sciences Corp., Piscataway, NJ), respectively, in Extraction/Labeling Buffer from the Ab Microarray Express Buffer Kit (Clontech Laboratories Inc., Mountain View, CA). Uncoupled Flours were removed by using the Zeba™ Desalt Spin Columns (Pierce Biotechnology, Rockford, IL). For native antigen preparation, 200 mg of frozen tissue was ground with 0.5 g of alumina in a mortar. Prechilled Extracted/Labeling Buffer (1–2 ml) was added and the paste was centrifuged to collect the supernatant. Protein concentrations of the extracts were determined using microBCA Protein Assay Reagent Kit (Pierce Biotechnology, Rockford, IL). For each microarray incubation, 200 µg of protein extracts was diluted in 5 ml of Incubation Buffer provided by the Ab Microarray Express Buffer Kit (Clontech Laboratories Inc., Mountain View, CA), and applied to the AB Microarray-500 slide (Clontech Laboratories Inc., Mountain View, CA). After incubation for 45 min at room temperature with gentle rocking, the array slide was washed three times with phosphate-buffered saline (PBS). One hundred micrograms of each labelled cancer plasma IgG were combined with equal amounts of pooled labelled control IgG and added to each slide and allowed to hybridize at room temperature for 45 min. The array was then washed with the Wash Buffers provided by the Ab Microarray Express Buffer kit, once with water, spin-dried, and scanned with a ScanArray 4000XL scanner (Perkin Elmer, Waltham, MA) to obtain Cy5 and Cy3 images. To confirm the microarray results for each cancer plasma sample, another microarray incubation was performed by swapping the fluorescent dyes in the labelling of cancer and control IgGs.

## 2.3. Analysis of the array data and identification of significant autoantibody biomarkers

The Cy5 and Cy3 images of the antibody array experiments of the eleven cancer plasma samples were analysed by GenePix Pro 6.0 microarray image analysis software (MDS Inc., Toronto, Canada) to produce background-subtracted fluorescence intensity data. Log<sub>2</sub>-transformed normalised fluorescence intensity ratios were median-centred and averaged for the dye swapping experiments. Significance Analysis of Microarrays (SAMs) method<sup>30</sup> was first used to identify autoantibodies with statistically significant changes in intensity ratios relative to normal, by assimilating a set of t-tests. Each autoantibody is assigned a test score on the basis of its change in intensity relative to the standard deviation of repeated measurements. The biomarkers were ranked accord-

ing to the calculated false discovery rate, with a false discovery rate of 3.832% as the cut-off point. The array data were also analysed using a normal mixture approach<sup>31</sup> for the detection of autoantibody biomarkers. Transformed z-scores of one-sample t-statistics were clustered into the null group (corresponding to antibodies that are not different between healthy and cancer samples) and the non-null group (corresponding to antibodies that are different between healthy and cancer samples). The ranking of biomarkers was based on the estimated posterior probability that an individual antibody is null. Those biomarkers that were identified as significant in both methods were then entered into the functional annotation and enrichment analysis. The SAM method with two-class t-statistics was performed on the same dataset to identify autoantibody biomarkers that segregate mucinous ovarian cancer patients with and without a smoking history.

## 2.4. Functional annotation and enrichment analysis

Functional annotation and enrichment analysis of the biomarkers was performed using web-based DAVID Functional Annotation Tool (<http://david.abcc.ncifcrf.gov/summary.jsp>). GenBank accession numbers of the high-ranking biomarkers were submitted to the on-line software to search for significant association of the biomarker clusters with relevant Gene Ontology (GO) terms and Kyoto Encyclopedia of Genes and Genomes (KEGG) pathways.

## 2.5. Immunohistochemistry to determine the expression levels of pathway-specific tumour antigens

A panel of 5 normal ovarian, 10 borderline and 15 invasive mucinous ovarian tumour tissues were used for the immunohistochemical staining for pathway-specific tumour antigens. Seven-micron sections were cut from the paraffin-archived tissues, mounted on Superfrost Plus microscopic slides (Fisher Scientific, Pittsburgh, PA) and incubated at 50 °C for 4 h. The sections were de-paraffinized in xylene and rehydrated with a descending series of ethanol. For antigen unmasking, sections were immersed in antigen-unmasking solution (Vector Laboratories, Burlingame, CA) and boiled in a microwave oven for 10 min. Endogenous peroxidase activity was quenched using 0.3% H<sub>2</sub>O<sub>2</sub> in methanol for 20 min. The sections were then blocked with normal horse serum for 20 min and were subsequently incubated overnight with primary antibodies at 4 °C. All primary antibodies were purchased from BD Biosciences (San Jose, CA) and were used in 1:70–100 dilutions. After incubation, VECTASTAIN Elite Avidin-Biotin Complex kit and the substrate diaminobenzidine (DAB) (Vector Laboratories, Burlingame, CA) were used for colour development. The sections were counterstained lightly with hematoxylin (Fisher Scientific, Pittsburgh, PA), dehydrated with an ascending series of ethanol, cleared in xylene, and mounted in Permount (Fisher Scientific, Pittsburgh, PA). The staining was quantified with a semiquantitative scoring system. The weighted score was obtained by multiplying the staining intensity score (3+, strong positive stain in cells; 2+, moderate stain in cells; 1+, weak stain in cells and 0, no evidence of stain) and score for the percentage of positive cells



(3+, most of cells stained; 2+, half of cells stained; 1+, few cells stained and 0, no cells stained). Two observers scored the slides independently, and the scores for all cases were compared for discrepancies. The data obtained were analysed by Mann–Whitney test with MINITAB statistical software (Minitab, State College, PA) as the data were not normally distributed. The staining of a tumour sample is considered as significantly different from that of the normal ovaries when  $P < 0.05$ .

### 3. Results

#### 3.1. Autoantibody profiling of mucinous plasma by reverse capture antibody array platform

We explored the use of an innovative ‘reverse capture antibody array’ method to profile the autoantibodies of eleven cases of mucinous ovarian cancer plasma samples. The clinicopathologic information of the patients is listed in Table S1. The ‘reverse capture antibody array’ method is based on the concept of dual-antibody sandwich ELISA.<sup>28,32</sup> This method (Fig. S1) uses native protein antigens extracted from a pool of six mucinous tumour tissues and captured by the monoclonal antibodies on a commercial high-density antibody microarray as ‘baits’ to bind fluorescently labelled human immunoglobulins (IgGs) purified from patient and control

plasma samples.<sup>29</sup> The competitive binding between patient and control antibodies to the antigens is visualised by fluorescence intensities of the two dyes.

The results of a representative array experiment are presented in Fig. 1. To control for any labelling artifacts and confirm the differential antibody profiles, a second microarray hybridization was performed by reversing the fluorescent dyes in the labelling of antibodies. Authentic difference in the antibody titre will show reverse colour change on the same spots in the two arrays (Fig. 1). Analysis of antibody array data using the analysis package ‘Significance Analysis of Microarrays’ (SAMs)<sup>30</sup> resulted in the identification of 37 potential autoantibody biomarkers that are significantly elevated in the mucinous cases as compared to normal controls (Fig. 2a and Table S2), and six autoantibody biomarkers that can differentiate smoking and non-smoking cases (Fig. 2b). Furthermore, we also analysed the data using a normal mixture approach<sup>31</sup> for the detection of autoantibody biomarkers, which is based on the clustering of transformed z-scores of t-statistics into the null group (corresponding to antibodies that are not different between healthy and cancer samples) and the non-null group (corresponding to antibodies that are different between healthy and cancer samples). SAM generated false discovery rate for the identified marker list, whereas the mixture approach provided the estimation of the posterior probability that an individual antibody is null

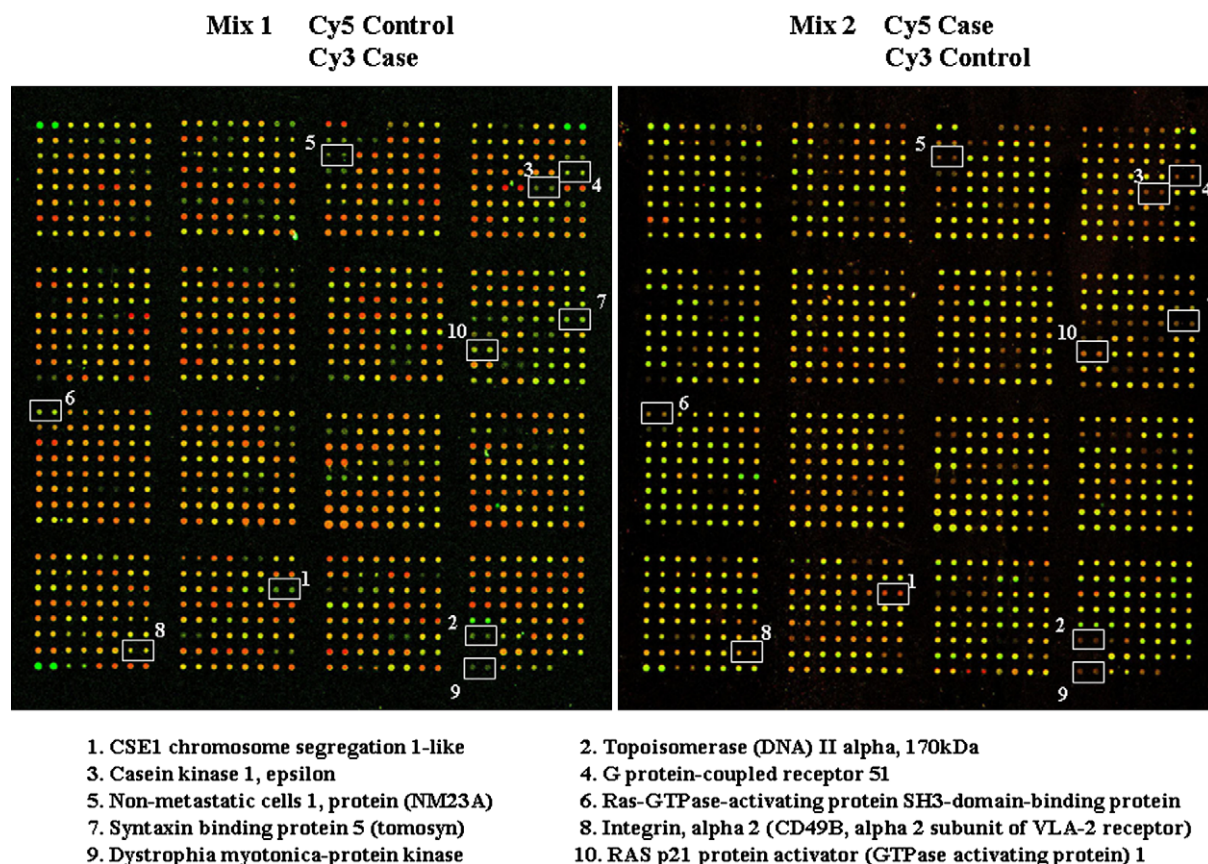
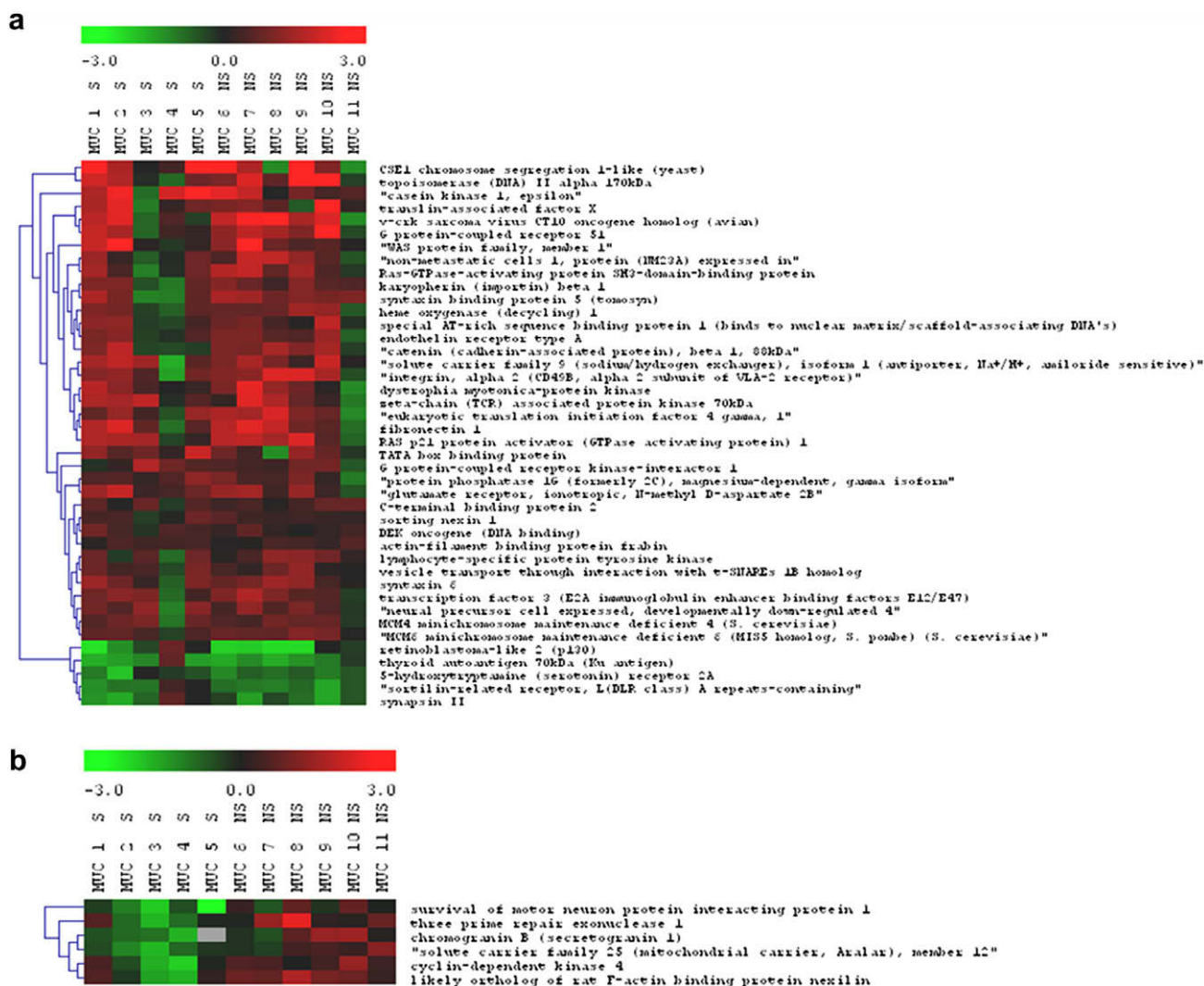


Fig. 1 – Representative figure of an antibody array experiment. Antibodies that are elevated in cancer plasma are green in array 1 and red in array 2. Some of the identified autoantibody biomarkers are marked as shown.



**Fig. 2 – Autoantibody biomarkers for mucinous ovarian cancer determined by ‘Significance Analysis of Microarrays’. The heat maps show (a) autoantibodies that are significantly different between cancer cases and healthy control; and (b) autoantibodies that are significantly different between smoking and non-smoking group.**

and hence the ranking of antibodies in decreasing order of the posterior probabilities. Table S2 and S3 present, respectively, the statistics of SAM, and the top ranking autoantibodies of normal mixture model, respectively, for the autoantibodies that were elevated in the mucinous cases. There are 35 such antibody biomarkers that are identified as significant with the use of both SAM and the normal mixture approach (Table 1).

### 3.2. Annotation analysis of the targets of identified antibody biomarkers

To interrogate the potential functions and the associated pathways of the targets of identified antibody biomarkers in ovarian tumours, we performed a functional annotation and enrichment analysis of the 35 autoantibody biomarkers using DAVID Functional Annotation Tool.<sup>33</sup> Functional annotation of the antibody targets suggested that mucinous ovarian plasma samples are enriched with antibodies that target nucleoproteins, as in many autoimmune diseases, as well as

antibodies that target intracellular cell organisation and signalling proteins (Table 2). In particular, search in Kyoto Encyclopedia of Genes and Genomes (KEGG) indicated significant enrichment of six elevated tumour autoantibodies that target antigens involved in integrins-mediated pathway, and three tumour autoantibodies that target antigens in Wnt signalling pathways (Table 3 and Fig. S2).

### 3.3. Elevated expression of the pathway-associated antibody antigens in mucinous ovarian tumours

The finding of autoantibodies in cancer plasmas that target integrins and Wnt signalling pathways may suggest that these two pathways are deregulated in mucinous ovarian cancer. To corroborate this finding, we employed antibodies that are specific to the marker antigens in the immunohistochemical staining of a panel of archived ovarian specimens that include normal ovaries, borderline and invasive mucinous ovarian tumours. The results of immunohistochemistry (Fig. 3) showed significant overexpression of all pathway-

**Table 1 – The list of 35 autoantibody biomarkers that are significant with both ‘Significance Analysis of Microarrays’ and the normal mixture approaches.**

ID	Accession number	Fold-changes relative to normal
Casein kinase 1, epsilon	P49674	2.529
CSE1 chromosome segregation 1-like (yeast)	P55060	2.49
Topoisomerase (DNA) II alpha 170 kDa	P11388	2.462
v-crk sarcoma virus CT10 oncogene homologue (avian)	P46108	2.254
RAS p21 protein activator (GTPase-activating protein) 1	P20938	2.085
G protein-coupled receptor 51	075899	2.053
WAS protein family, member 1	Q92558	2.032
Fibronectin 1	P02751	1.969
Integrin, alpha 2(CD49B, alpha 2 subunit of VLA-2 receptor)	P17301	1.895
Solute carrier family 9 (sodium/hydrogen exchanger), isoform 1 (antiporter. Na <sup>+</sup> /H <sup>+</sup> , amiloride sensitive)	P19634	1.834
zeta-Chain (TCR) associated protein kinase 70 kDa	P43403	1812
Translin-associated factor X	Q99598	1.793
Eukaryotic translation initiation factor 4 gamma. 1	Q04637	1.775
Glutamate receptor, ionotropic, N-methyl D-aspartate 2B	Q13224	1.753
Syntaxin binding protein 5 (tomosyn)	Q5T5C0	1.667
Dystrophia myotonica-protein kinase	Q09013	1.659
Syntaxin 6	Q43752	1.623
Ras-GTPase-activating protein SH3-domain-binding protein	Q13283	1.817
Catenin (cadherin-associated protein), beta 1.88 kDa	P35222	1.615
Non-metastatic cells 1, protein (NM23A) expressed in	P15531	1.589
Transcription factor 3 (E2A immunoglobulin enhancer binding factors E12/E47)	P15923	1.583
TATA box binding protein	P20226	1.534
Neural precursor cell expressed, developmentally down-regulated 4	P46934	1.496
Heme oxygenase (decycling) 1	P09601	1.47
Special AT-rich sequence binding protein 1 (binds to nuclear matrix/scaffold-associating DNA's)	Q01826	1.468
Endothelin receptor type A	P25101	1.468
Karyopherin (importin) beta 1	Q14974	1.452
G protein-coupled receptor kinase-interactor 1	Q9Y2X7	1.418
MCM4 minichromosome maintenance deficient 4 ( <i>S. cerevisiae</i> )	P33991	1.404
Lymphocyte-specific protein tyrosine kinase	P06239	1.398
Protein phosphatase 1G (formerly 2C), magnesium-dependent, gamma isoform	Q15355	1.388
Vesicle transport through interaction with t-SNAREs 1B homologue	Q9UEU0	1.375
C-terminal binding protein 2	P56545	1.335
DEK oncogene (DNA binding)	P35659	1.264
Sorting nexin 1	Q13596	1.232

associated tumour antigens except GIT1 in mucinous ovarian tumours, suggesting that these pathways might be aberrantly activated in mucinous ovarian tumours and the host immune system might have heightened reactivities with epitopes presented by these antigens.

#### 4. Discussion

The immune system of cancer patients actively monitors and elicits T-cell<sup>34</sup> and autoantibody response to tumour-associated antigens.<sup>16,17</sup> Detection of autoantibody reactivity is useful in biomarker discovery and can reveal the identity of antigens that might play a role in the pathophysiologic development of diseases. Some studies have shown that the presence of serum autoantibodies is associated with changes in the antigens in human cancers.<sup>21,35</sup> Hence, screening of autoantibodies, whose levels significantly correlate with disease status, may be beneficial to both diagnostic and therapeutic advances.

Several array-based screening platforms have been reported for autoantibody screening.<sup>24,36</sup> However, these protein microarrays employed recombinant proteins that may not have the same posttranslational modifications and native configurations recognised by the autoantibodies. It has been reported that the removal of the carbohydrate moieties of Thomsen–Friedenreich antigen caused the loss of binding of autoantibodies.<sup>37,38</sup> Therefore, strategies that employ native antigens derived from diseased materials may add significant value to identify the authentic autoantibody–antigen reactivities. We have applied an innovative reverse-capture antibody array platform that uses tumour tissue-derived native protein antigens captured on an antibody microarray<sup>29</sup> to profile autoantibody biomarkers. The use of two methods to analyse the array data has allowed us to identify 35 autoantibodies that were elevated in cancer cases (Table 1). Functional annotation and enrichment analysis of these autoantibody biomarkers have shown that the tumour antigen targets for these autoantibodies are composed of nucleoproteins and intracellular cell organisation and



**Table 2 – Functional annotation and enrichment analysis of the autoantibody targets. Annotated gene functions were determined by searches in Gene Ontology.**

Term	Count <sup>a</sup>	Fold-enrichment <sup>b</sup>	P-value <sup>c</sup>
<i>Nuclear proteins (N = 17)</i>			
Nucleobase, nucleoside, nucleotide and nucleic acid metabolism	11	2.6	1.20E–03
DNA-dependent ATPase activity	3	54.4	1.20E–03
DNA-binding	7	4.1	3.20E–03
Cell proliferation	5	6	6.20E–03
Regulation of transcription	8	3	7.10E–03
Cell death	5	5.8	7.30E–03
Response to DNA damage stimulus	3	8.9	3.90E–02
<i>Cytoplasmic and plasma membrane proteins (N = 29)</i>			
Intracellular signalling cascade	12	4.4	2.20E–05
Receptor complex	4	25.4	4.60E–04
Cell communication	16	2.1	1.50E–03
Vesicle-mediated transport	6	6.5	1.70E–03
Cell proliferation	7	4.8	2.20E–03
Hydrolase activity, acting on ester bonds	6	4.8	6.50E–03
Apoptosis	6	4.2	1.10E–02
Cell surface receptor-linked signal transduction	8	2.3	3.80E–02

<sup>a</sup> The number of antigens belonging to an annotation term.  
<sup>b</sup> The ratio of the number of antigens described by the term category over total number of antigens in the list relative to the ratio of proteins with the same term category in the human genome background.  
<sup>c</sup> Modified Fisher Exact P-value to measure the enrichment in annotation terms.

**Table 3 – Enrichment analysis of the autoantibody targets in pathways by searches in Kyoto Encyclopedia of Genes and Genomes (KEGG) Pathway Databases.**

Term	Count <sup>a</sup>	Fold-enrichment <sup>b</sup>	P-value <sup>c</sup>	Genes
Wnt signalling pathway	3	12	1.70E–02	Catenin (cadherin-associated protein), beta 1,88kda Casein kinase 1, epsilon C-terminal binding protein 2
Regulation of actin cytoskeleton	6	5.9	2.10E–03	Integrin, alpha 2 (CD49B, alpha 2 subunit of VLA-2 receptor) Fibronectin 1 NHE-1 V-crk sarcoma virus CT10 oncogene homologue (avian) G protein-coupled receptor kinase-interactor 1 WAS protein family, member 1

<sup>a</sup> The number of antigens belonging to an annotation term.  
<sup>b</sup> The ratio of the number of antigens described by the term category over total number of antigens in the list relative to the ratio of proteins with the same term category in the human genome background.  
<sup>c</sup> Modified Fisher Exact P-value to measure the enrichment in annotation terms.

signalling proteins. Significantly, we found an enrichment of nine autoantibody antigens in the integrin pathway that regulates actin cytoskeleton and cell invasion (Fig. S2a), and beta-catenin-mediated Wnt signalling pathway<sup>39</sup> that is important during development and oncogenesis (Fig. S2b). Immunohistochemistry has revealed significant overexpression of eight of the nine antigens in both borderline and invasive mucinous ovarian tumours (Fig. 3). While the GIT1 antigen did not show significant overexpression in mucinous ovarian tumours, it is possible that the antigen underwent other changes such as mutations during pathogenesis that were not revealed by immunohistochemistry. Integrin receptors for fibronectin are important for the response of ovarian carcinoma to matrix microenvironment and metastasis.<sup>40,41</sup>

Some markers such as alpha 2-integrins are involved in the dissemination of mucinous cystadenocarcinoma,<sup>42</sup> and the expression of Wnt signalling protein beta-catenin was found distinctively high in the membrane and cytoplasm of mucinous tumours.<sup>43,44</sup> Hence overexpression of tumour antigens involved in these two pathways in mucinous ovarian tumours may suggest that the deregulation of both integrin and Wnt signalling pathways are important to pathogenic development of human mucinous ovarian cancer and likely stimulate the immune system to produce the autoantibody biomarkers identified by this autoantibody screen.

Epidemiologic studies have indicated that women with tobacco exposure have significant risk of developing mucinous ovarian cancer.<sup>11–13</sup> We therefore have analysed the reverse

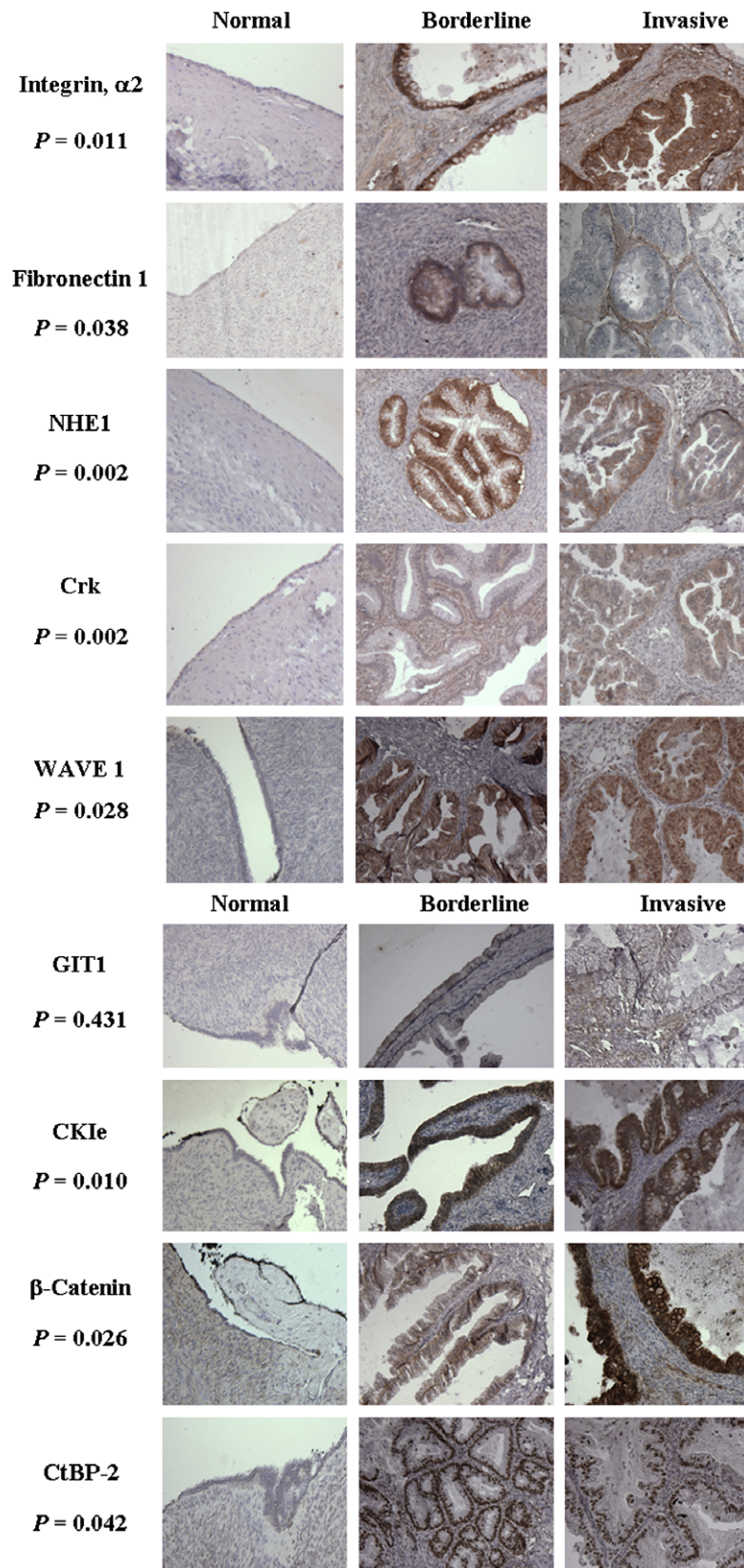


Fig. 3 – Immunohistochemistry for the expression of pathway-specific tumour antigens. Representative micrographs of immunohistochemical staining of normal, borderline and invasive mucinous ovarian tumour sections are shown. The names of the tumour antigens and the  $P$ -values for the Mann-Whitney analysis of the immunohistochemical results are shown on the left.



capture antibody array data to determine if there are autoantibody biomarkers that can distinguish between smoking and non-smoking mucinous cancers. Two-class SAM analysis has identified six antibodies that are significantly different between these two groups of mucinous cancer samples (Fig. 2b). These antibody targets play important roles in the homeostasis of different biological processes such as DNA repair (three-prime repair exonuclease 1), glucose metabolism (Aralar 1) and cell cycle regulation (cyclin-dependent kinase 4). Moreover, these proteins have been reported to be involved in autoimmunity.<sup>45–48</sup> We are currently performing studies to further evaluate if the identified marker targets can reveal any mechanistic differences underlying smoking and non-smoking mucinous ovarian cancer.

In conclusion, our autoantibody profiling in mucinous ovarian cancer using the innovative reverse capture antibody array platform has identified 35 autoantibody biomarkers. Nine of the autoantibody targets are associated with tumour antigens involved in integrins and Wnt signalling pathways. Autoantibody profiling may have substantial utility in identifying key signalling pathways that are deregulated in cancer and other diseases.

### Conflict of interest statement

Brian C-S. Liu serves as consultant for Inanovate, Inc.

### Acknowledgements

This study was supported by a generous grant from the Flight Attendant Medical Research Institute (FAMRI), and also partly from a pilot grant from Dana-Farber/Harvard Cancer Center Ovarian SPORE (5P50CA105009), EDRN (5V01CA086381), and Women's Cancer Program from Dana-Farber Cancer Institute. N.R. was supported by Ruth N. White Gynecologic Oncology Research Fellowship. The laboratory is also supported by Gillette Center for Women's Cancer, Ovarian Cancer Research Foundation, Adler Foundation, Inc., and Friends of Dana Farber Cancer Institute. We also thank Ian Ma and Anita Ng for the help with data management.

### Appendix A. Supplementary data

Supplementary data associated with this article can be found, in the online version, at doi:10.1016/j.ejca.2009.10.003.

### REFERENCES

1. American Cancer Society. Cancer facts and figures. American Cancer Society, Inc; 2004.
2. Bast Jr RC, Boyer CM, Olt GJ, et al. *Identification of marker for early detection of epithelial ovarian cancer*. London, England: Chapman and Hall; 1990.
3. Serov SF, Scully RE. *Histological typing of ovarian tumors*. Geneva: World Health Organization; 1993.
4. Vergote I, De Brabanter J, Fyles A, et al. Prognostic importance of degree of differentiation and cyst rupture in stage I invasive epithelial ovarian carcinoma. *Lancet* 2001;357(9251):176–82.
5. Harrison ML, Jameson C, Gore ME. Mucinous ovarian cancer. *Int J Gynecol Cancer* 2008;18(2):209–14.
6. Puls LE, Powell DE, DePriest PD, et al. Transition from benign to malignant epithelium in mucinous and serous ovarian cystadenocarcinoma. *Gynecol Oncol* 1992;47(1):53–7.
7. Ichikawa Y, Nishida M, Suzuki H, et al. Mutation of K-ras protooncogene is associated with histological subtypes in human mucinous ovarian tumors. *Cancer Res* 1994;54(1):33–5.
8. Mok SC, Bell DA, Knapp RC, et al. Mutation of K-ras protooncogene in human ovarian epithelial tumors of borderline malignancy. *Cancer Res* 1993;53(7):1489–92.
9. Wamunyokoli FW, Bonome T, Lee JY, et al. Expression profiling of mucinous tumors of the ovary identifies genes of clinicopathologic importance. *Clin Cancer Res* 2006;12(3 Pt 1):690–700.
10. Hess V, A'Hern R, Nasiri N, et al. Mucinous epithelial ovarian cancer: a separate entity requiring specific treatment. *J Clin Oncol* 2004;22(6):1040–4.
11. Marchbanks PA, Wilson H, Bastos E, et al. Cigarette smoking and epithelial ovarian cancer by histologic type. *Obstet Gynecol* 2000;95(2):255–60.
12. Modugno F, Ness RB, Cottreau CM. Cigarette smoking and the risk of mucinous and nonmucinous epithelial ovarian cancer. *Epidemiology* 2002;13(4):467–71.
13. Zhang Y, Coogan PF, Palmer JR, Strom BL, Rosenberg L. Cigarette smoking and increased risk of mucinous epithelial ovarian cancer. *Am J Epidemiol* 2004;159(2):133–9.
14. Parsons DW, Jones S, Zhang X, et al. An integrated genomic analysis of human glioblastoma multiforme. *Science* 2008;321(5897):1807–12.
15. Jones S, Zhang X, Parsons DW, et al. Core signaling pathways in human pancreatic cancers revealed by global genomic analyses. *Science* 2008;321(5897):1801–6.
16. Chinni SR, Falchetto R, Gercel-Taylor C, et al. Humoral immune responses to cathepsin D and glucose-regulated protein 78 in ovarian cancer patients. *Clin Cancer Res* 1997;3(9):1557–64.
17. Korneeva I, Bongiovanni AM, Girotra M, Caputo TA, Witkin SS. Serum antibodies to the 27-kd heat shock protein in women with gynecologic cancers. *Am J Obstet Gynecol* 2000;183(1):18–21.
18. Gnjatich S, Atanackovic D, Jager E, et al. Survey of naturally occurring CD4+ T cell responses against NY-ESO-1 in cancer patients: correlation with antibody responses. *Proc Natl Acad Sci USA* 2003;100(15):8862–7.
19. Frenkel K, Karkoszka J, Glassman T, et al. Serum autoantibodies recognizing 5-hydroxymethyl-2'-deoxyuridine, an oxidized DNA base, as biomarkers of cancer risk in women. *Cancer Epidemiol Biomarkers Prev* 1998;7(1):49–57.
20. Hu JJ, Chi CX, Frenkel K, et al. Alpha-tocopherol dietary supplement decreases titers of antibody against 5-hydroxymethyl-2'-deoxyuridine (HMDU). *Cancer Epidemiol Biomarkers Prev* 1999;8(8):693–8.
21. Lubin R, Zalcman G, Bouchet L, et al. Serum p53 antibodies as early markers of lung cancer. *Nat Med* 1995;1(7):701–2.
22. Caron M, Choquet-Kastylevsky G, Joubert-Caron R. Cancer immunomics using autoantibody signatures for biomarker discovery. *Mol Cell Proteomics* 2007;6(7):1115–22.
23. Wang Y, Han KJ, Pang XW, et al. Large scale identification of human hepatocellular carcinoma-associated antigens by autoantibodies. *J Immunol* 2002;169(2):1102–9.
24. Hudson ME, Pozdnyakova I, Haines K, Mor G, Snyder M. Identification of differentially expressed proteins in ovarian cancer using high-density protein microarrays. *Proc Natl Acad Sci USA* 2007;104(44):17494–9.

25. Hong SH, Misek DE, Wang H, et al. An autoantibody-mediated immune response to calreticulin isoforms in pancreatic cancer. *Cancer Res* 2004;**64**(15):5504–10.
26. Tomaino B, Cappello P, Capello M, et al. Autoantibody signature in human ductal pancreatic adenocarcinoma. *J Proteome Res* 2007;**6**(10):4025–31.
27. Madoz-Gurpide J, Kuick R, Wang H, Misek DE, Hanash SM. Integral protein microarrays for the identification of lung cancer antigens in sera that induce a humoral immune response. *Mol Cell Proteomics* 2008;**7**(2):268–81.
28. Ehrlich JR, Qin S, Liu BC. The ‘reverse capture’ autoantibody microarray: a native antigen-based platform for autoantibody profiling. *Nat Protoc* 2006;**1**(1):452–60.
29. Ehrlich JR, Tang L, Caiazzo Jr RJ, et al. The reverse capture autoantibody microarray: an innovative approach to profiling the autoantibody response to tissue-derived native antigens. In: Ehrlich JR, Liu BC, editors. *Tissue proteomics – pathways, biomarkers, and drug discovery*. New Jersey: Humana Press; 2008. p. 175–92.
30. Tusher VG, Tibshirani R, Chu G. Significance analysis of microarrays applied to the ionizing radiation response. *Proc Natl Acad Sci USA* 2001;**98**(9):5116–21.
31. McLachlan GJ, Bean RW, Jones LB. A simple implementation of a normal mixture approach to differential gene expression in multiclass microarrays. *Bioinformatics* 2006;**22**(13):1608–15.
32. Qin S, Qiu W, Ehrlich JR, et al. Development of a “reverse capture” autoantibody microarray for studies of antigen–autoantibody profiling. *Proteomics* 2006;**6**(10):3199–209.
33. Dennis Jr G, Sherman BT, Hosack DA, et al. DAVID: Database for Annotation, Visualization, and Integrated Discovery. *Genome Biol* 2003;**4**(5):P3.
34. Tatsumi T, Herrem CJ, Olson WC, et al. Disease stage variation in CD4+ and CD8+ T-cell reactivity to the receptor tyrosine kinase EphA2 in patients with renal cell carcinoma. *Cancer Res* 2003;**63**(15):4481–9.
35. Zhang J, Chan EK. Autoantibodies to IGF-II mRNA binding protein p62 and overexpression of p62 in human hepatocellular carcinoma. *Autoimmun Rev* 2002;**1**(3):146–53.
36. Chatterjee M, Mohapatra S, Ionan A, et al. Diagnostic markers of ovarian cancer by high-throughput antigen cloning and detection on arrays. *Cancer Res* 2006;**66**(2):1181–90.
37. Lang GA, Yeaman GR. Autoantibodies in endometriosis sera recognize a Thomsen–Friedenreich-like carbohydrate antigen. *J Autoimmun* 2001;**16**(2):151–61.
38. Yeaman GR, Collins JE, Lang GA. Autoantibody responses to carbohydrate epitopes in endometriosis. *Ann N Y Acad Sci* 2002;**955**:174–82 [discussion 199–200, 396–406].
39. Novak A, Dedhar S. Signaling through beta-catenin and Lef/Tcf. *Cell Mol Life Sci* 1999;**56**(5–6):523–37.
40. Shield K, Riley C, Quinn MA, et al. Alpha2beta1 integrin affects metastatic potential of ovarian carcinoma spheroids by supporting disaggregation and proteolysis. *J Carcinog* 2007;**6**:11.
41. Ahmed N, Riley C, Rice G, Quinn M. Role of integrin receptors for fibronectin, collagen and laminin in the regulation of ovarian carcinoma functions in response to a matrix microenvironment. *Clin Exp Metastasis* 2005;**22**(5):391–402.
42. Kishikawa T, Sakamoto M, Ino Y, et al. Two distinct patterns of peritoneal involvement shown by in vitro and in vivo ovarian cancer dissemination models. *Invasion Metastasis* 1995;**15**(1–2):11–21.
43. Sarrio D, Moreno-Bueno G, Sanchez-Estevéz C, et al. Expression of cadherins and catenins correlates with distinct histologic types of ovarian carcinomas. *Hum Pathol* 2006;**37**(8):1042–9.
44. Kildal W, Risberg B, Abeler VM, et al. Beta-catenin expression, DNA ploidy and clinicopathological features in ovarian cancer: a study in 253 patients. *Eur J Cancer* 2005;**41**(8):1127–34.
45. Marzo N, Ortega S, Stratmann T, et al. Cyclin-dependent kinase 4 hyperactivity promotes autoreactivity in the immune system but protects pancreatic cell mass from autoimmune destruction in the nonobese diabetic mouse model. *J Immunol* 2008;**180**(2):1189–98.
46. Yang YG, Lindahl T, Barnes DE. Trex1 exonuclease degrades ssDNA to prevent chronic checkpoint activation and autoimmune disease. *Cell* 2007;**131**(5):873–86.
47. Hur JW, Sung YK, Shin HD, et al. TREX1 polymorphisms associated with autoantibodies in patients with systemic lupus erythematosus. *Rheumatol Int* 2008;**28**(8):783–9.
48. Delunardo F, Conti F, Margutti P, et al. Identification and characterization of the carboxy-terminal region of Sip-1, a novel autoantigen in Behcet’s disease. *Arthritis Res Ther* 2006;**8**(3):R71.